



Erasmus+ Blended Intensive Program  
Czech School of Physiotherapy and  
Occupational Therapy,  
Interdisciplinary Approach in PT and OT.

In Olomouc, from 19 to 23 January 2026.

Organised by the Department of Clinical  
Rehabilitation,  
Faculty of Health Sciences,  
Palacký University in Olomouc.



Faculty of Health  
Sciences

# Czech School of Physiotherapy & Occupational Therapy VI.

Faculty of Health Sciences UP  
<https://physioschool.upol.cz>  
[petra.gaul@upol.cz](mailto:petra.gaul@upol.cz)

Palacký University Olomouc is the second-  
oldest university in Czechia, educating  
scholars since the 16th century.  
The city of Olomouc is also the place of one  
of the richest national heritage sites,  
second only to Prague. A second home to  
more than 23,000 students from around the  
world, Olomouc is a university town,  
sometimes nicknamed the "Czech Oxford".

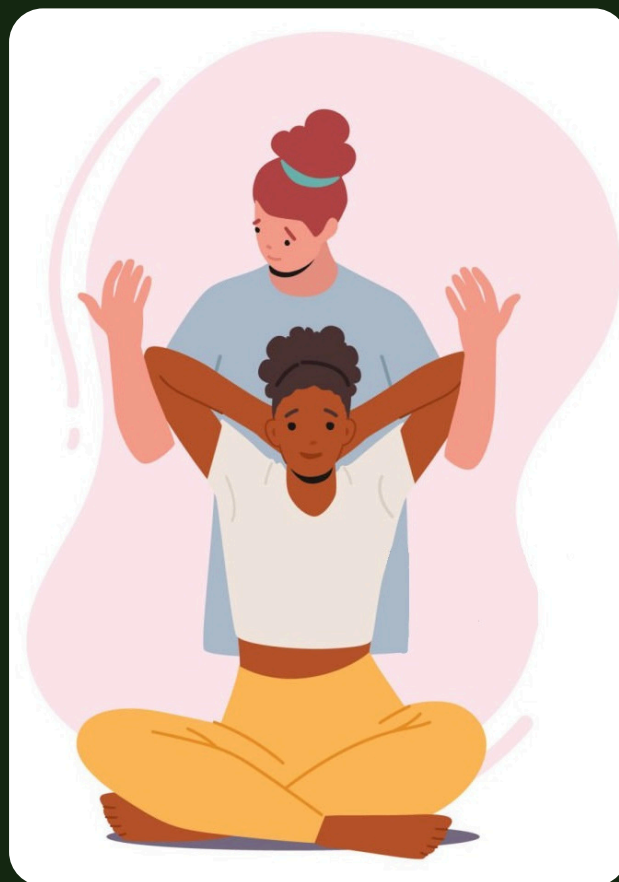


# MONDAY

- 9:00 Introduction to BIP
- 9:30 Participants presenting their universities
- 11:00 Coffee break
- 11:15 Canva brainstorming in groups
- 12:00 Lunch break
- 12:40 Novelties in Functional Testing in Neurology
- 15:30 Old Town City Tour (meeting point at the Clock Tower)

# TUESDAY

- 8:30 Breathing - why?
- 10:00 Coffee break
- 10:15 Voice Therapy
- 11:45 Lunch break
- 13:00 Trip to Klimkovice Sanatoria (departure at 13:00 sharp from Šantovka City Centre)
- 18:30 Bowling Tournament (Šantovka)



# FRIDAY

- 8:30 Project presentations
- 10:00 Coffee break
- 10:15 Certificates and Feedback
- 11:30 Departure

# WEDNESDAY

- 10:30 Interdisciplinary Approach in Patients with MS
- 12:00 Lunch break
- 13:00 Master Class
- 14:30 Coffee break
- 15:00 Traditional Chinese Medicine

# THURSDAY

- 8:30 Robotics in PT&OT 1
- 10:00 Coffee break
- 10:20 Robotics in PT&OT 2
- 12:00 Lunch break
- 12:30 Gr. AB - Mindfulness and Breathing  
Gr. CD - Group project
- 13:45 Coffee break
- 14:00 Gr. AB - Group project  
Gr. CD - Mindfulness and Breathing