



Erasmus+ Blended Intensive Program
Czech School of Physiotherapy and
Occupational Therapy,
Interdisciplinary Approach in PT and OT.

In Olomouc on 8-12th September 2025.

Organized by the Department of Clinical
Rehabilitation,
Faculty of Health Sciences,
Palacký University in Olomouc.



Faculty of Health
Sciences

Czech School of Physiotherapy & Occupational Therapy V.

Faculty of Health Sciences UP
<https://physioschool.upol.cz>
petra.gaul@upol.cz

Palacký University Olomouc is the second-
oldest university in Czechia, educating
scholars since the 16th century.
The city of Olomouc is also the place of one
of the richest national heritage sites,
second only to Prague. A second home to
more than 23,000 students from around the
world, Olomouc is a university town,
sometimes nicknamed the "Czech Oxford".

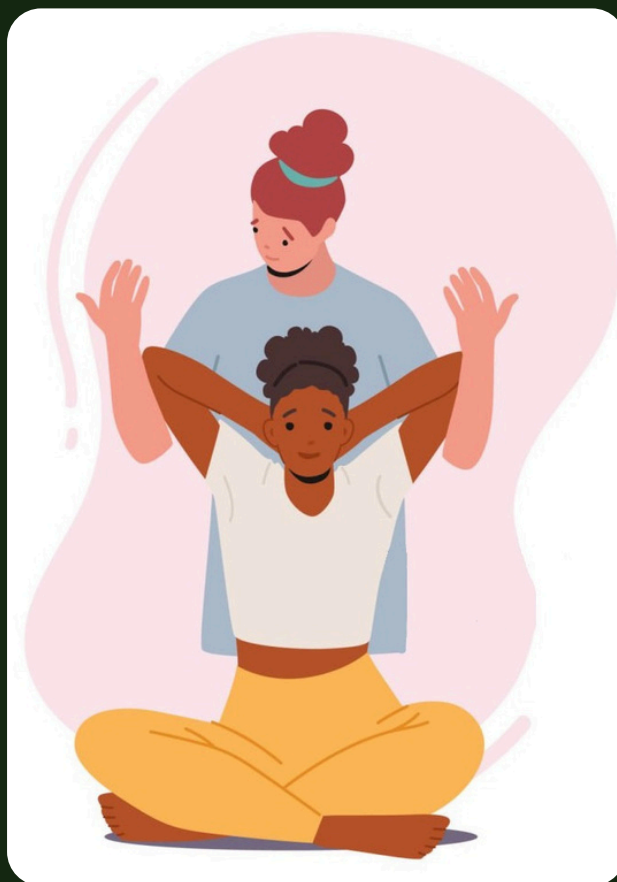


MONDAY

- 9:00 Introduction to BIP
- 9:30 Participants presenting their universities
- 10:45 Coffee break
- 11:00 Voice Therapy
- 12:30 Lunch break
- 13:00 Orofacial Rehabilitation
- 15:30 Old Town City Tour (meeting point at the Clock Tower)

TUESDAY

- 8:30 Master Class
- 10:00 Coffee break
- 10:15 Master Class
- 11:45 Lunch break
- 13:00 Trip to Klimkovice Sanatoria - departure at 13:00 sharp from Šantovka City Centre (back in Olomouc around 18:00)



FRIDAY

- 8:30 Project presentations
- 10:00 Coffee break
- 10:15 Certificates and feedback
- 11:30 Departure

WEDNESDAY

- 10:00 Coffee break
- 10:30 Older Adults and Nutrition in Rehabilitation
- 12:00 Lunch break
- 13:00 Development of Occupational Therapy in Poland
- 14:30 Coffee break
- 14:50 Group work
- 16:00 Traditional Chinese Medicine
- 18:15 Bowling Tournament

THURSDAY

- 8:30 Gr. ABC - Master Class 1
Gr. DEF - Master Class 2
- 9:50 Coffee break
- 10:10 Gr. ABC - Master Class 2
Gr. DEF - Master Class 1
- 11:30 Lunch break
- 12:15 Gr. ABC - Mindfulness and Breathing
Gr. DEF - Group work
- 13:45 Coffee break
- 14:00 Gr. ABC - Group work
Gr. DEF - Mindfulness and Breathing